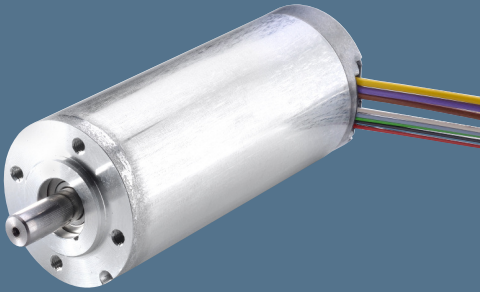


# ECI-motor

ECI-42.40



- Highly dynamic 3-phase internal rotor motor in EC technology
- Multi-pole motor design for optimum power density
- Aluminium housing
- Robust ball bearing system for long service life
- Basic motor with electronics module K1 for operation with external drive electronics
- low cogging torque

## Nenndaten

Typ		ECI-42.40 B00	ECI-42.40 D00
Nominal voltage ( $U_{BN}$ )	V DC	24	48
Nominal speed ( $n_N$ ) ( controlled )	min <sup>-1</sup>	4000	4000
Nominal torque ( $M_N$ )	mNm	220	220
Nominal current ( $I_{BN}$ )	A	5,1	2,6
Nominal output power ( $P_N$ )	W	92	92
Speed at no-load operation ( $n_l$ )	min <sup>-1</sup>	6500	6500
No-load current ( $I_{BL}$ )	A	0,4	0,2
Short-term permiss. peak torque ( $M_{max}$ )	mNm	960	960
Permiss. peak current, motor lead ( $I_{max}$ )	A	21	10,5
Induced voltage ( $U_{max}$ )	V/1000 min <sup>-1</sup>	4,41	8,38
Terminal resistance ( $R_V$ )	$\Omega$	0,49	1,5
Terminal inductance ( $L_V$ )	mH	0,5	1,84
Rotor moment of inertia ( $J_R$ )	kgm <sup>2</sup> x10 <sup>-6</sup>	6,7	6,7
Protection class		IP 40	IP 40
Ambient temperature range ( $T_U$ )	°C	0...+40°C	0...+40°C
Motor mass (m)	kg	0,48	0,48
Order No.		932 4240 122	932 4240 123

$F_{axial}$  30 N  
 $F_{radial}$  75 N     $L_1$  20 mm

Permissible shaft load at nominal speed and life expectancy  $L_{10}$  at 20 000 h (at  $T_U$  max. 40°C).

### Signal line

No.	Colour	Function
4	green	Hall A
3	white	Hall B
8	grey	Hall C
2	red	UB
7	black	Gnd

### Winding input lead

No.	Colour	Function
1	yellow	W
5	violet	V
6	brown	U

